

Our Communication Principles



JADE TEXTILE

Guidance

We adopt a leadership approach that involves listening, observing, and inclusivity.

We establish the necessary foundation to get to know team members closely and create an environment filled with trust.

Teamwork and Collaboration

We value the ideas of team members.

We set shared goals with our team to achieve the company's objectives and strategies.

We motivate our team towards accomplishing these goals.

Feedback and Performance Improvement

We conduct feedback discussions focusing on areas for development and the strengths of team members.

Task Delegation

We provide opportunities for our team to take the initiative.

We ensure a fair distribution of tasks among employees.

Feedback and Performance Improvement

We hold feedback discussions with an emphasis on areas for growth and the strengths of team members.



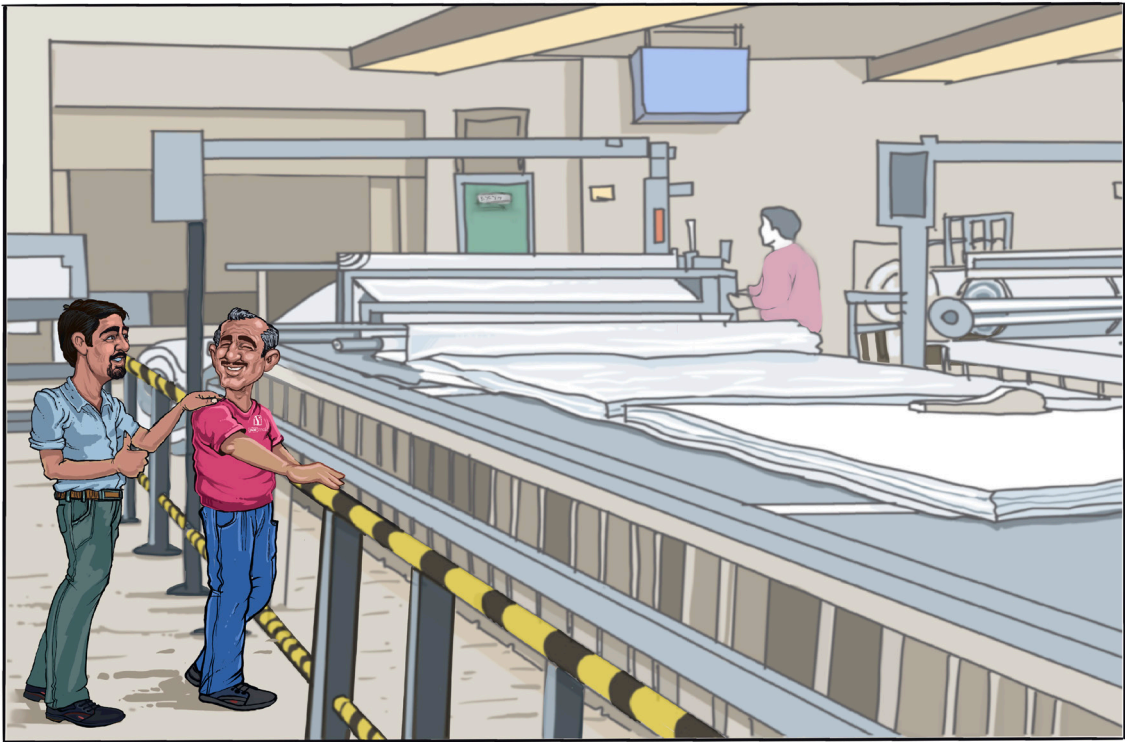
COACHING:

- ✦ We embrace a leadership approach that involves listening, observing, and inclusiveness.
- ✦ We prepare the necessary groundwork to get to know team members closely and create a trusting environment.



TEAMWORK AND COLLABORATION:

- ✦ We value the ideas of team members.
- ✦ We set common goals with our team for company objectives and strategies and motivate our team towards them.



FEEDBACK AND PERFORMANCE IMPROVEMENT:

- ✦ We conduct feedback discussions, focusing on the development areas and team members strengths.
- ✦ We appreciate the efforts of our team and commend every success.



DELEGATION:

- ✦ We provide opportunities for our team to take initiative.
- ✦ We ensure a fair distribution of tasks among employees.



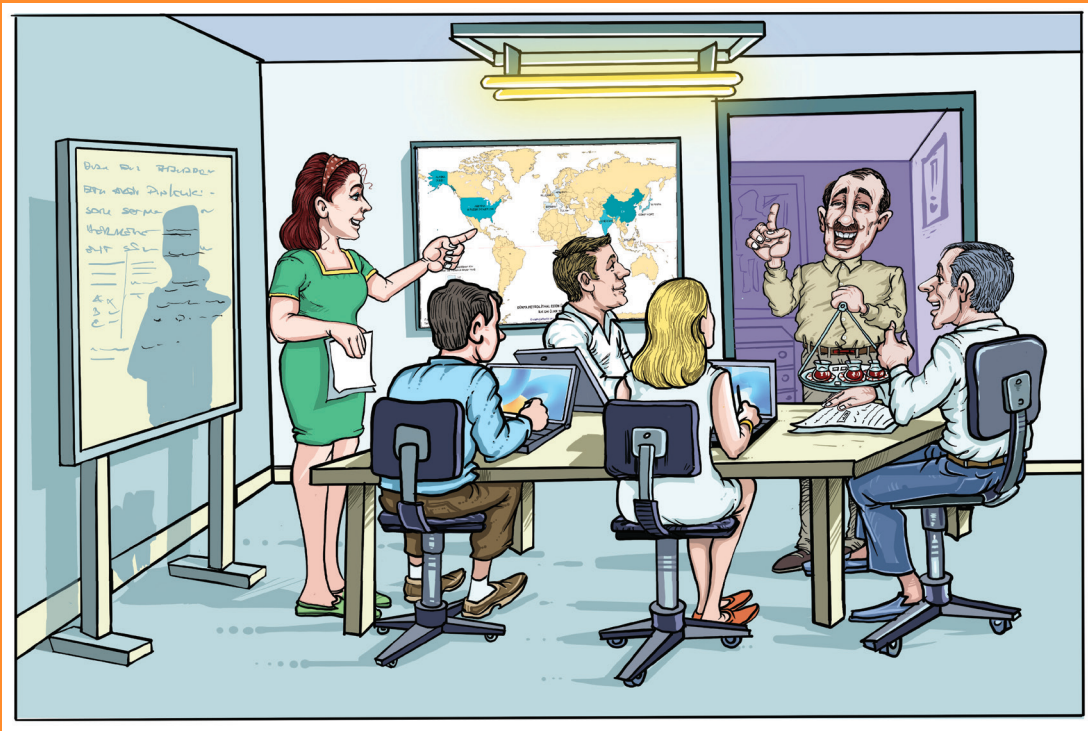
COMMUNICATION LANGUAGE:

- ✦ We use a positive communication language and aim to spread positive energy.
- ✦ We adopt the "we" language in communication, emphasizing teamwork.



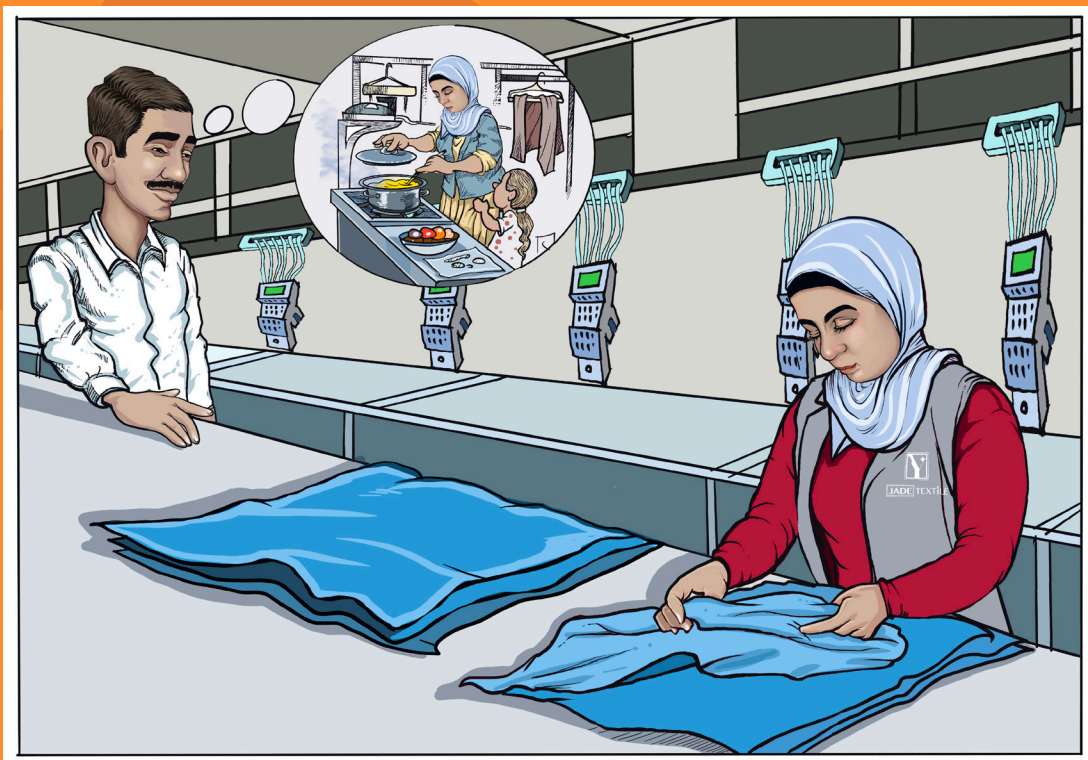
MOTIVATION:

- ✦ We plan actions to increase the motivation of our team.
- ✦ We value and follow up on the special occasions of team members.



ASKING QUESTIONS AND LISTENING:

- ✦ We ask developmental questions rather than critical ones.
- ✦ We are an active listener, and We give everyone equal speaking rights.



EMPATHY:

- ✦ When necessary, we focus on understanding the emotions and thoughts of others by putting ourselves in their shoes.